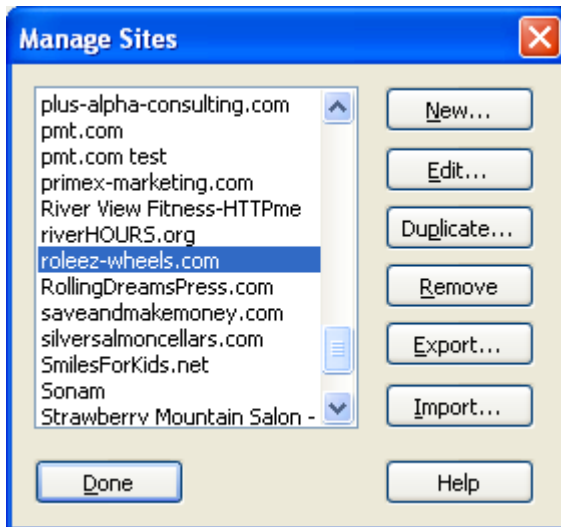


How to set up Dreamweaver

On the Dreamweaver menu bar, click on:

“Site” → “Manage Sites...”



Click on:

“New Site”

Site Definition for roleez-wheels.com ✕


Basic **Advanced**

Category


- Local Info
- Remote Info
- Testing Server
- Cloaking
- Design Notes
- Site Map Layout
- File View Columns
- Contribute

Local Info

Site name:

Local root folder: 

Refresh local file list automatically

Default images folder: 

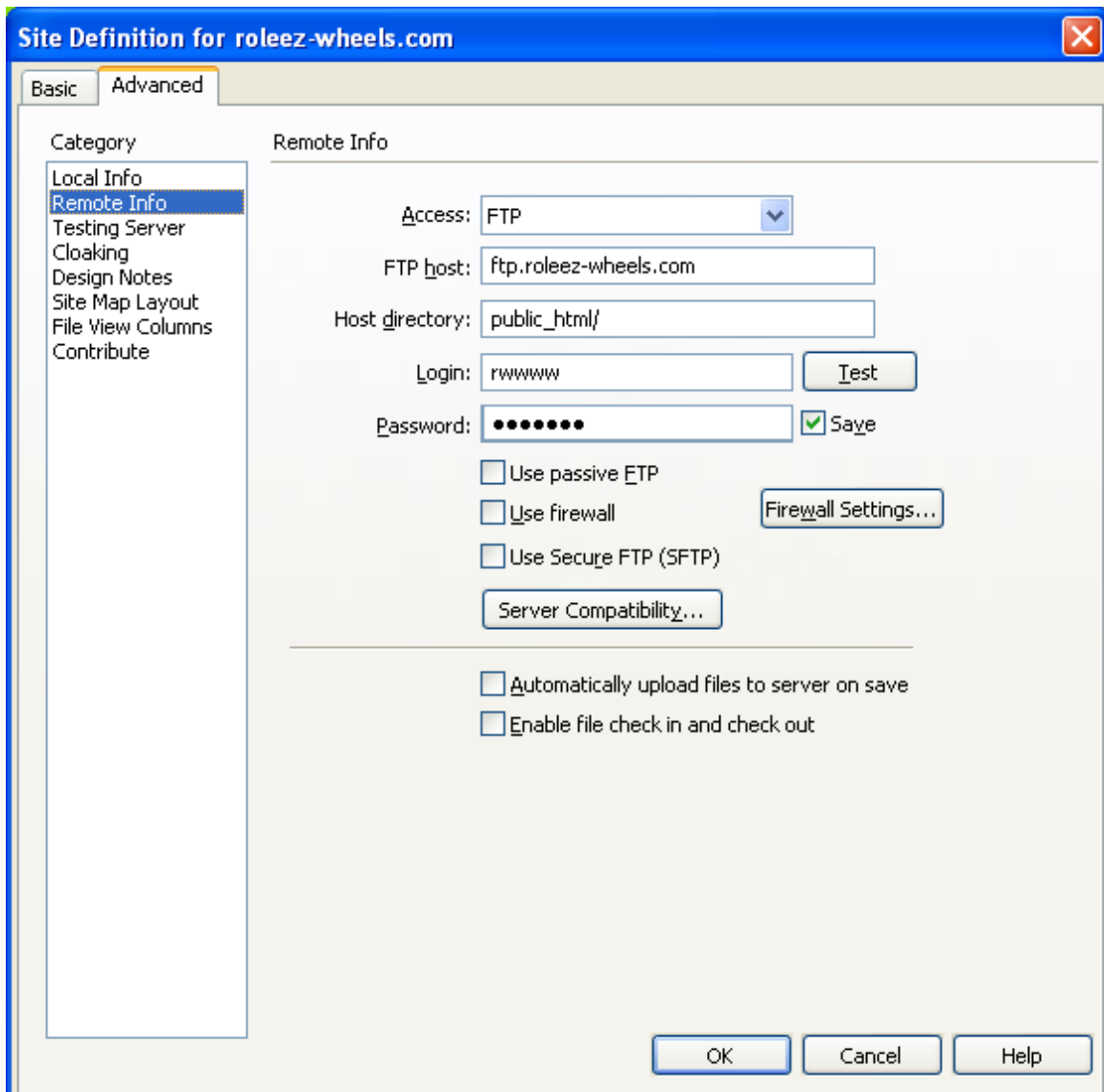
HTTP address:

This address enables the Link Checker to detect HTTP links that refer to your own site.

Cache: Enable cache

The cache maintains file and asset information in the site. This speeds up the Asset panel, link management, and Site Map features.

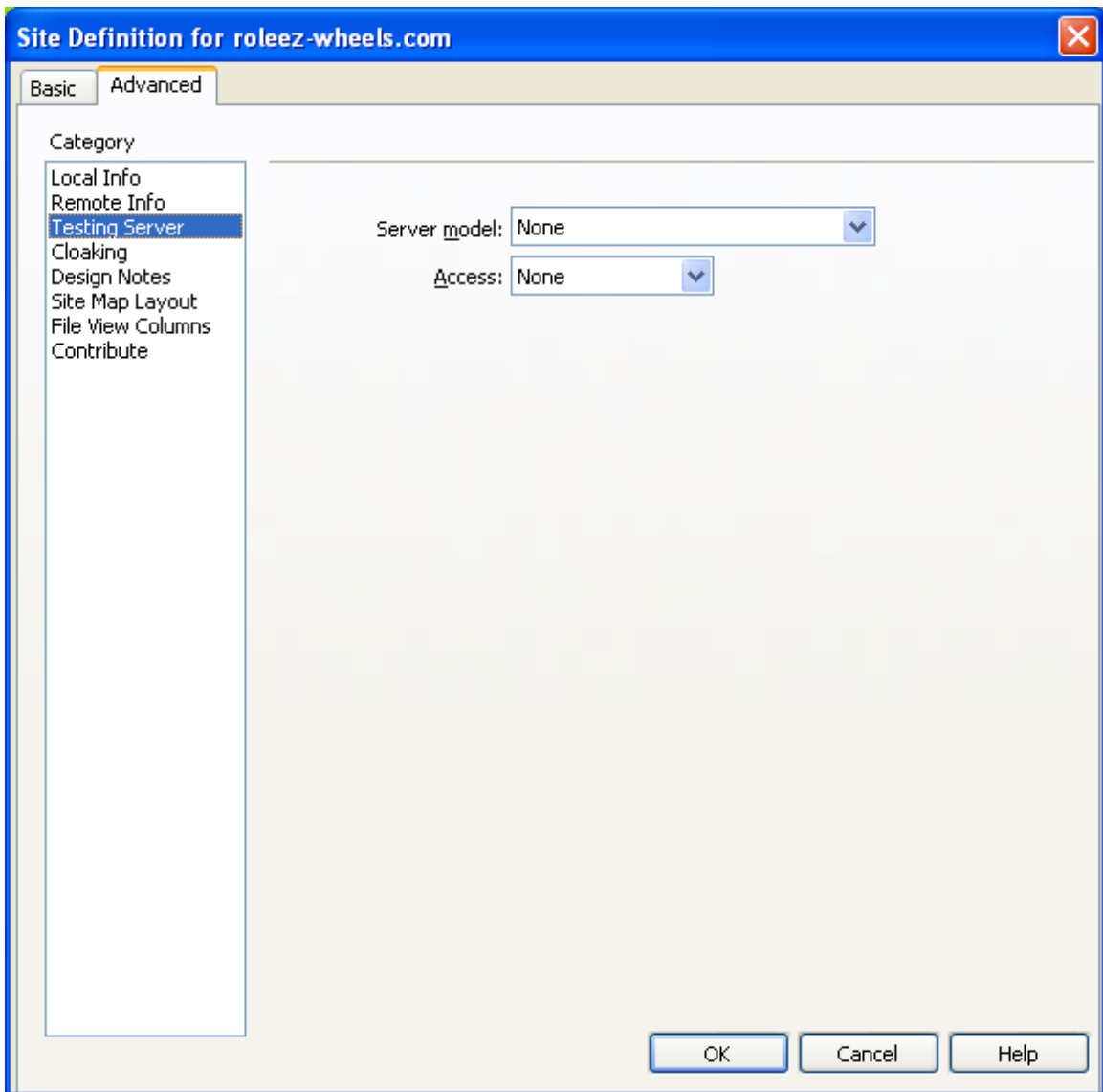
Fill in the information as appropriate.



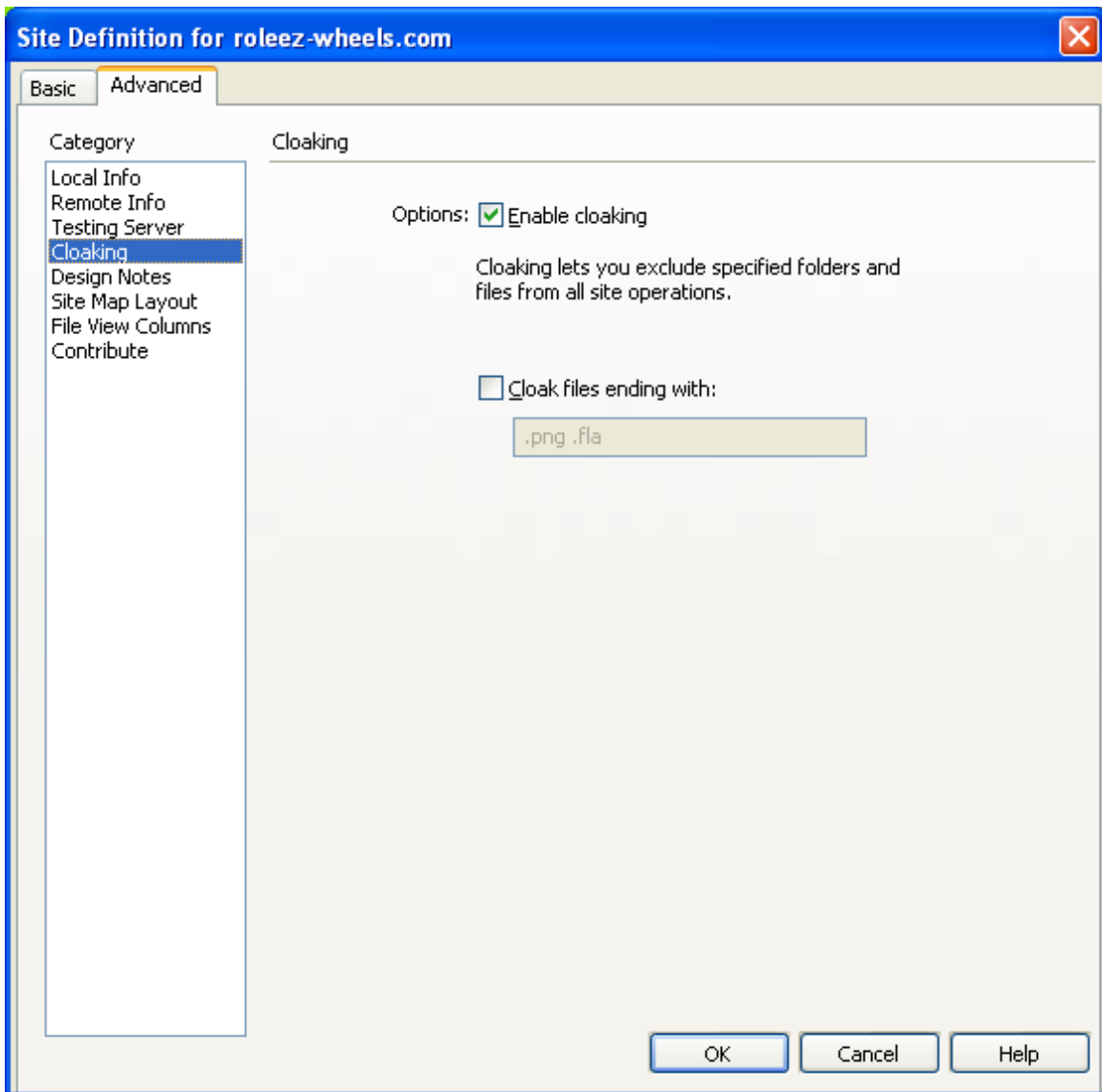
Your "FTP host" will be ftp.yourdomainname.com

The "Host directory" will be public_html/

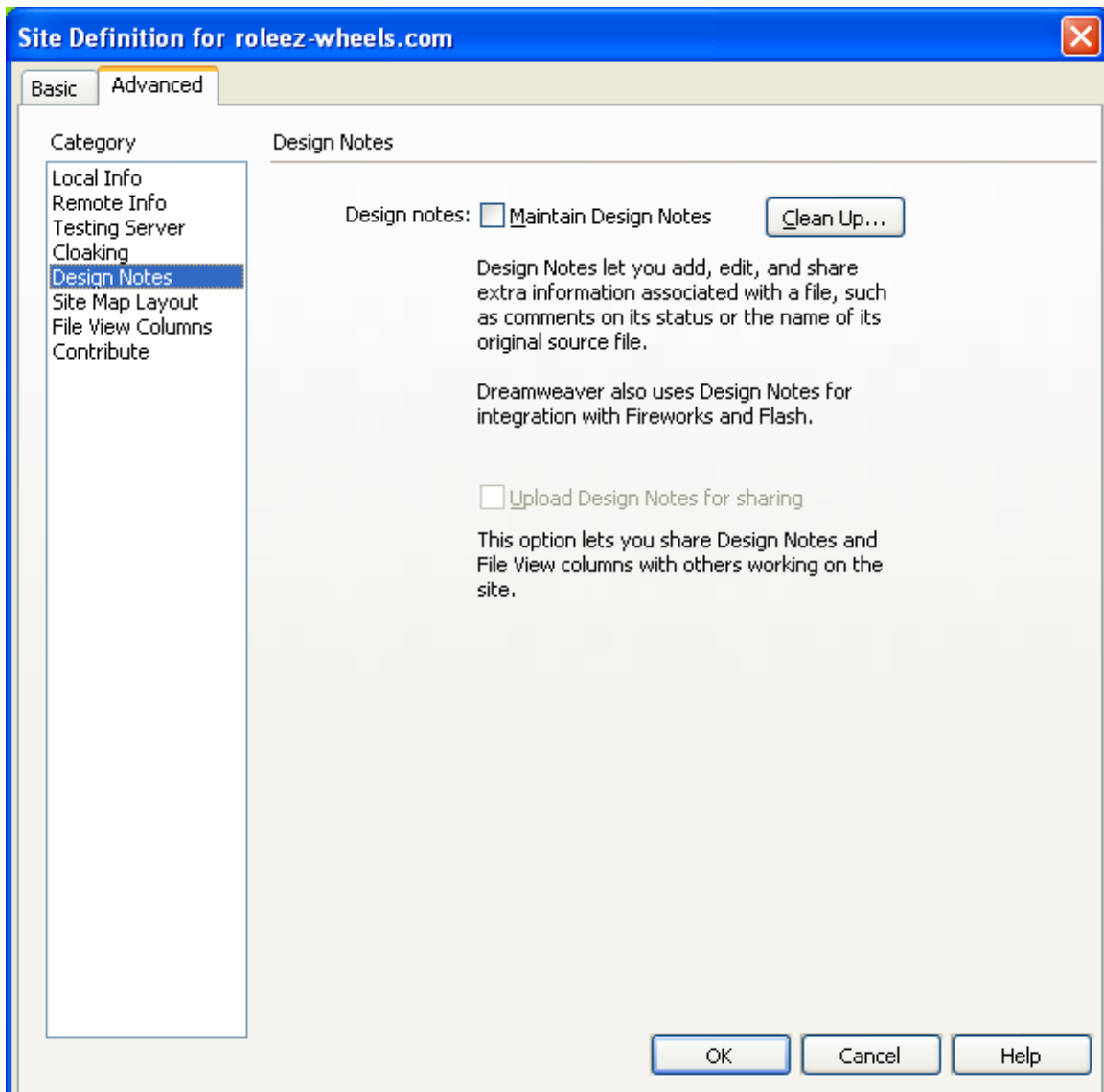
Contact Hammock Hosting for your "Login" and "Password," which will be different from the above.



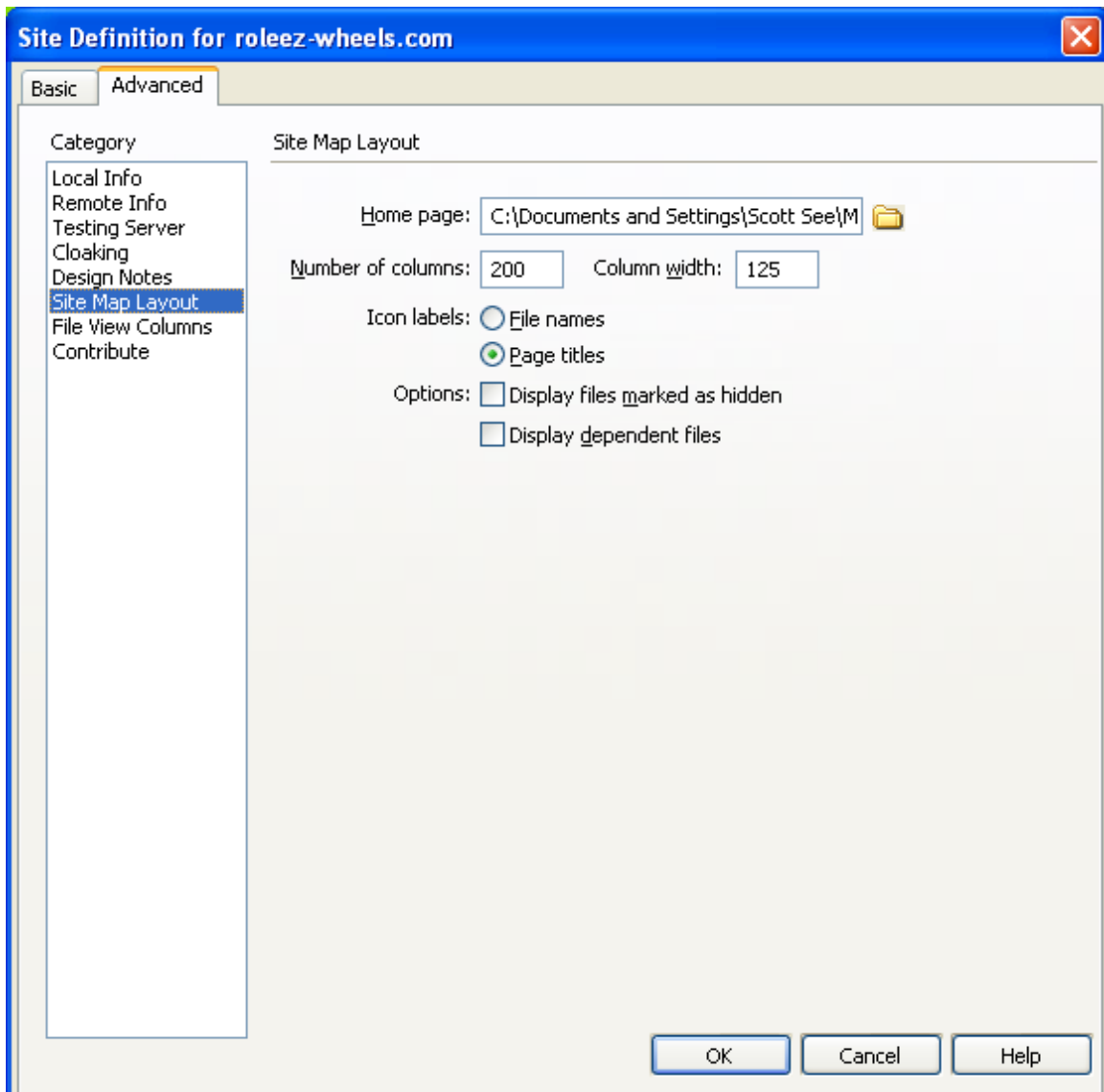
You can ignore this page.



Check "Enable cloaking."

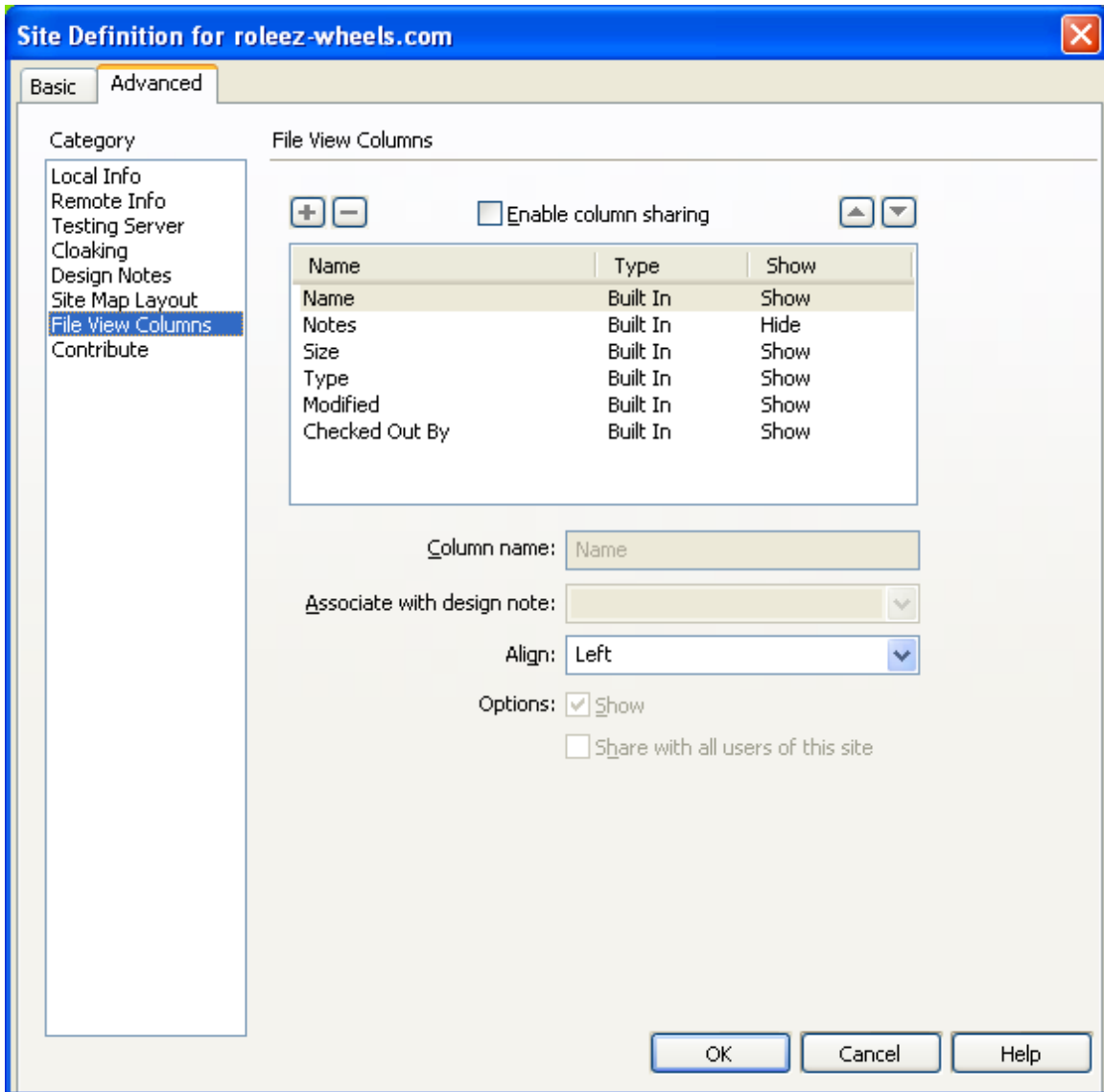


Uncheck "Maintain Design Notes." If you're prompted to clean up existing Design Notes, click on "No."

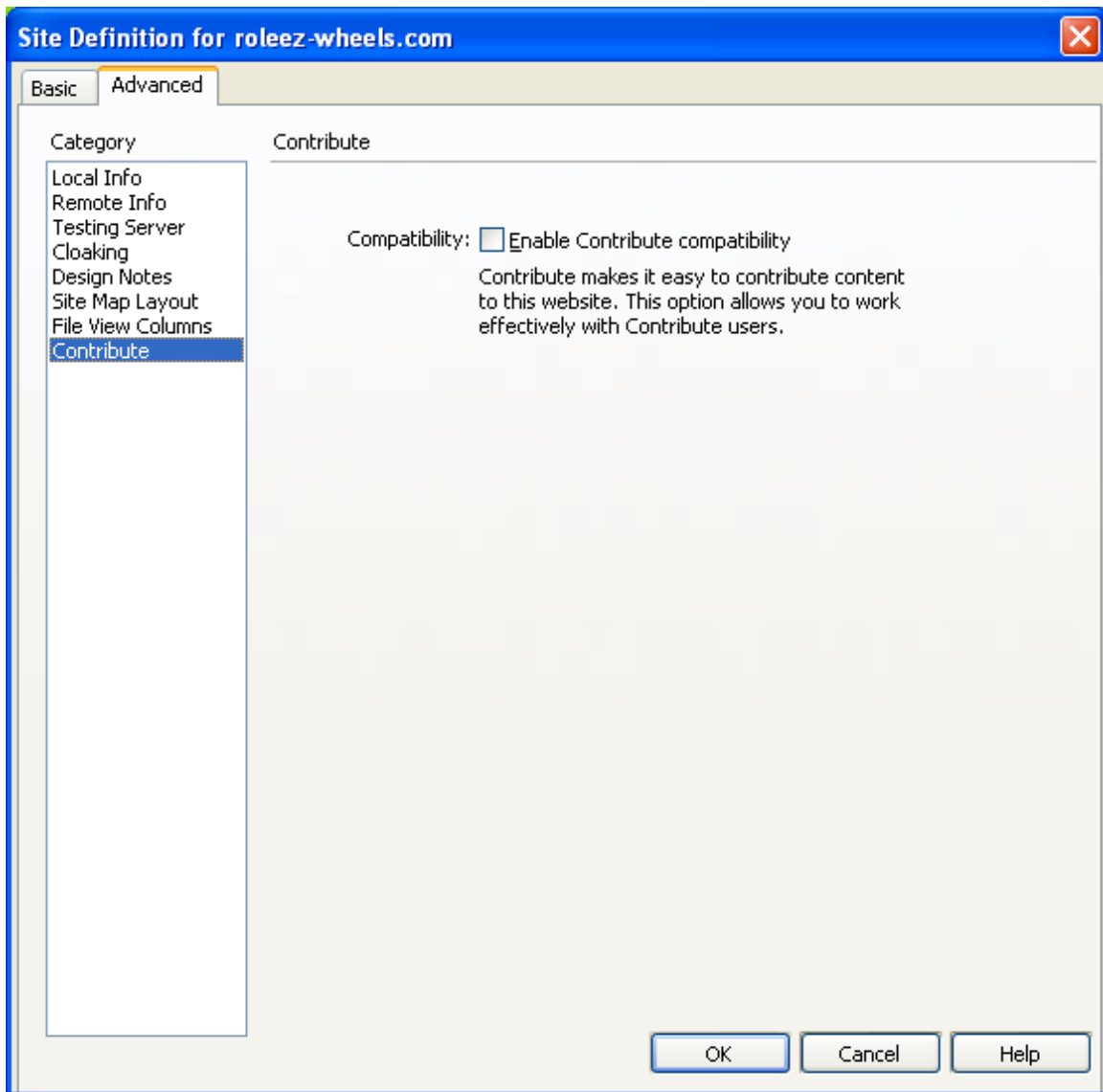


The "Home page" field is optional.

Click the "Page titles" radio button.



Ignore this page.



Uncheck this box.

You're ready to go, now.